

A Village Enhancement Plan

for

The Town of Kingfield, Maine



June, 2011

June, 2011

SELECTMEN: TOWN OF KINGFIELD

Heather Moody, Chairperson
Neil McCurdy
Mervin Wilson
Raymond Meldrum
Sarah Churchill

PLANNING BOARD: TOWN OF KINGFIELD

Clay Tranton, Chairperson
Wade Brown
Brad Orbeton
C. Foster Robinson
Thaniel Smith
Charles Twitchell
Mark Wahl, Jr.

VILLAGE ENHANCEMENT COMMITTEE

Cynthia Orcutt, Chairperson
Pat Johnson
Heather Moody
Mary Beth La Motte
Jack Mc Kee
Dawn Sova
Lisa Standish
Meg Williams

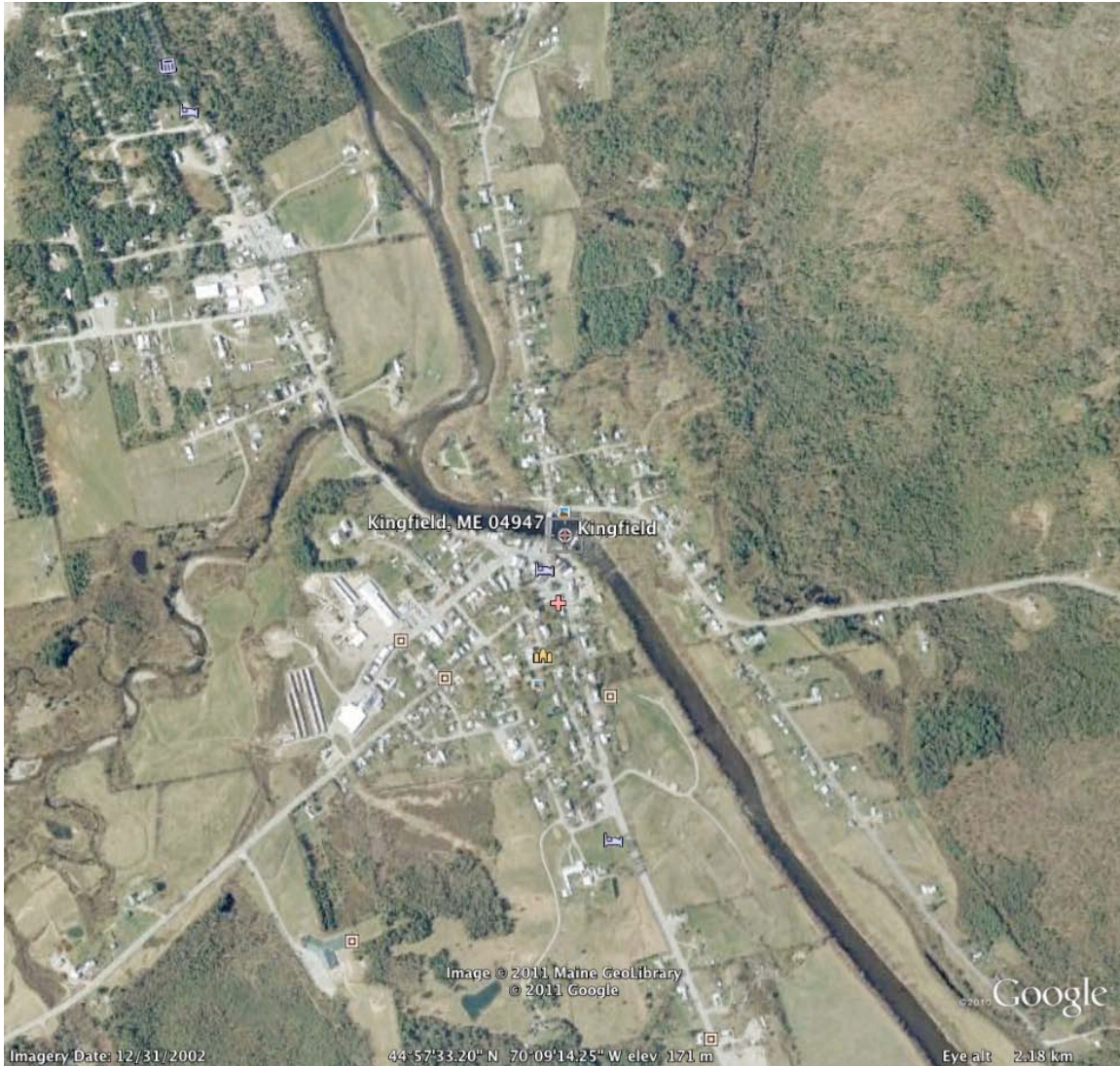
Douglas Marble, Administrative Assistant
Lenna Ross Targett, Town Clerk, Treasurer
Road Commissioner, Bruce White

June, 2011

TABLE OF CONTENTS

1. Project Description - Summary
 - Village Enhancement Plan
 - Seven Potential Projects
 - Aerial View of Kingfield
2. Process
3. Goals and Objectives
4. Program of Needs
5. Existing Conditions
6. Village Enhancement Plan
 - a. Streetscape improvements and traffic calming, gateways
 - b. Village Green
 - c. Riverfront Park
 - d. Kingfield Family Park
 - e. Historic Walking Loops
 - f. "Knapp Property" Development
 - g. Kingfield Town Park
7. APPENDIX
 - Comparison of VEC and Public Design Workshop Goals & Program
 - Traffic Study Comparisons, Gorrill Palmer Traffic Engineers
 - Poster announcing second Public Design Workshop; April 14

June, 2011



Aerial view of the Town of Kingfield. North is at the top of the image.

June, 2011

PROJECT DESCRIPTION - SUMMARY

Village Enhancement Plan (VEP) outlines a conceptual plan for the enhancement of the Village of Kingfield in order to promote economic development. The VEP addresses enhancements to Village streets, open spaces, currently vacant parcels, currently distressed parcels and the historic resources in the Village. Seven major projects are outlined in the plan, including:

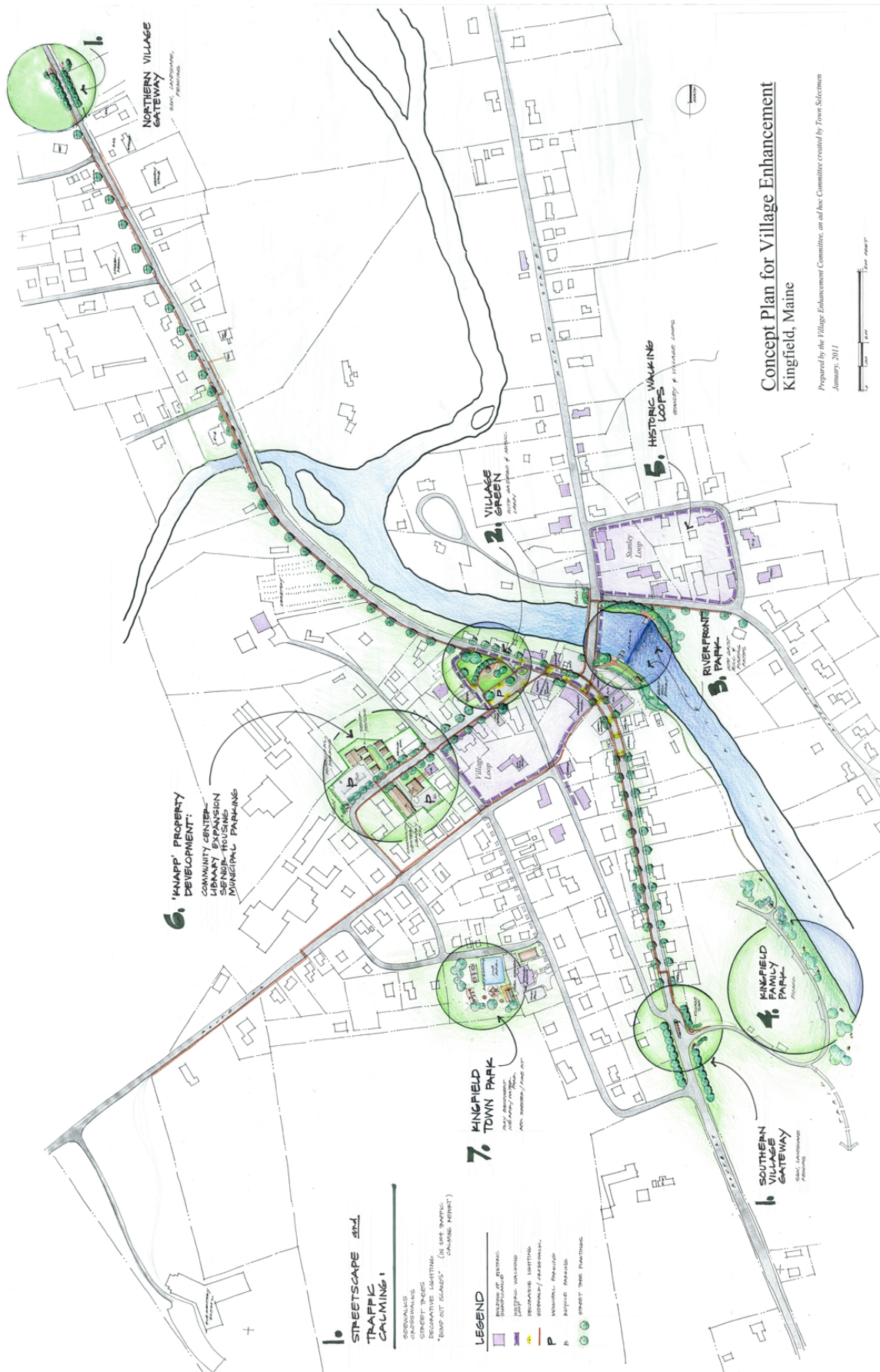
- a. Streetscape improvements and traffic calming, and gateways*
- b. Village Green*
- c. Riverfront Park*
- d. Kingfield Family Park*
- e. Historic Walking Loops*
- f. 'Knapp Property' Development*
- g. Kingfield Town Park*

As the plan is conceptual in nature, the final details and designs of each of these seven projects may undergo change and variation from what is depicted on the VEP. Each project will require additional public input and Town approval of a final design before actual implementation. The VEP is to be used as a guide to direct the Town, it's Committees, Selectmen and potential private developers in their future efforts to enhance the Village in the center of Kingfield.

The process of developing the VEP began in July, 2010. During the time spent developing the VEP, there have been 21 meetings of the Village Enhancement Committee, 2 Public Design Workshops, 6 meetings with the Town Selectmen to discuss the VEP, 3 meetings with the Planning Board to discuss the VEP and a presentation to the Town at the January, 2011 Special Town meeting. A vote for final approval of the VEP is scheduled for the June 18, 2011 Town Meeting.

The following pages illustrate the Village Enhancement Plan followed by a brief description of each of the seven projects.

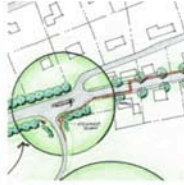
June, 2011



June, 2011

Kingfield Village Concept Enhancement Plan Projects

January, 2011



1. Traffic Calming, Sidewalk Improvements, Gateways

Goal #1; To create a safe, pedestrian-centered Village.

Goal #2; To promote economic development.

New sidewalks, crosswalks, bump-outs, street tree plantings, decorative lighting, signage, gateways to the Village.



2. Village Green

Goal #3; To create gathering places for the Community.

Village Green in the center of the Village. An open lawn area with benches, walkways, a gazebo for music performances, art shows, etc. Parking & lighting.



3. Riverfront Park

Goal #3; To create gathering places for the Community.

Public open space along the edges of the River. Walkways, picnic areas, deck at River edge, fishing access and installation of the historic Grist Mill Exhibit.



4. Kingfield Family Park

Goal #3; To create gathering places for the Community. Connect to trails.

Development of a picnic/frisbee toss area along the Carrabassett River. Located adjacent to trails back to Riverfront Park and south through Public Lots.



5. Historic Walking Loops

Goal #4; To celebrate the character of our Northern New England Village.

Two walking loops; The Stanley Loop and The Village Loop which travel by and describe the historic buildings, people and history of Kingfield.



6. 'Knapp Property' Development

Goal #2; To promote economic development.

Goal #3; To create gathering places for the Community.

Community Center/Senior Center, Fitness/Rehab Center, expansion of the Library, Senior housing and municipal parking (50 spaces).



7. Kingfield Town Park

Goal #5; To provide recreation in the Village. Connect to trails.

Expand playground with water park/ice rink and shelter/camp gathering building with indoor space, porch and wintertime fire pit.

June, 2011

PROCESS

On November 8, 2007 the citizens of the Town of Kingfield approved the establishment of a Tax Increment Financing Program (TIF), Credit Enhancement Agreement and Public Bond Issue, made possible by the construction of a bottling plant for Poland Springs/Nestle Waters in the south of Town. The TIF District was developed as a local tool to promote economic development and the TIF Committee identified a list of potential investments that would accomplish this goal. Included in this list were several line items labeled "Village Enhancement", that were to be defined by a Village Enhancement Plan. These included the following:

Development of a Village Enhancement Plan – a physical plan.

Line items:

<i>Truck/Traffic Calming Measures</i>	<i>\$100,000</i>
<i>Upgrade/Replace/Extend sidewalks</i>	<i>\$ 40,000</i>
<i>Village Enhancement Plan</i>	<i>\$ 15,000</i>
<i>Village Enhancement Capital Investment</i>	<i>\$500,000</i>
<i>Public Infrastructure investment</i>	<i><u>\$500,000</u></i>
<i>Total (over 30 years)</i>	<i>\$1,155,000</i>

There were also several line items that supported development of a revolving Loan Fund to encourage economic development, envisioned as a complimentary program to the Enhancement efforts:

Development of an Economic Development Plan/Loan Fund

Line items:

<i>Revolving Loan Fund</i>	<i>\$500,000</i>
<i>Bus Investment to support tourism</i>	<i><u>\$ 50,000</u></i>
<i>Total (over 30 years)</i>	<i>\$550,000</i>

In the summer of 2010, the Selectmen formed the Village Enhancement Committee (VEC) and charged the VEC with the task of developing a Village Enhancement Plan in order to guide the expenditure of TIF funds earmarked for 'Village Enhancement', as well as consider guidance and possible development of the revolving loan fund in support of VEP initiatives.

The VEC began the process by identifying a set of Goals and Objectives, developing a Program of Need and creating a Plan that identified an area to be considered the 'Village' for planning purposes. After preparing an Existing Conditions Plan as a base for understanding, the VEC developed a series of alternative plans, that placed elements identified in the Program of Need in differing ways that satisfied stated Goals and Objectives. After evaluation by the VEC, best ideas from each alternative plan were combined into a preferred Concept Plan for Village Enhancement.

In order to test the validity of this Concept Plan for Village Enhancement, a public design workshop was held on November 18, 2010. Approximately 40 people attended, including a good diversity of constituencies such as Planning

June, 2011

Board members, seniors, students, long time residents, new residents, members of the American Legion, members of historical, civic and outdoor recreation organizations, many local business owners and employees and our Maine State Representative. Workshop participants went through a similar planning process as the one described above: identifying a set of Goals and Objectives, developing a Program of Need and, utilizing the same Existing Conditions Plan, developing a Concept Plan for Village Enhancement. The result of this Public Design Workshop was a set of Goals and Objectives, a Program and Concept Plan that very closely paralleled the work done by the VEC. A Final Village Enhancement Plan (VEP) grew out of the combination of both plans and became the base plan defining "Village Enhancement" for the purpose of guiding the expenditure of TIF funds.

The following is the poster/email notice announcing the Public Workshop:

Kingfield Village Public Design Workshop

November 18; 6 to 8:30PM at the Herbert Grand Hotel

Purpose of the Workshop: to elicit goals, needs, and design ideas for the Village of Kingfield for incorporation into the Village Enhancement Plan currently being drafted by the Village Enhancement Committee.

Background: The Selectmen of Kingfield formed the VEC in order to have the VEC develop a physical and economic plan for the improvement and enhancement of the Village of Kingfield. Over the next 20 years some funds from the Poland Springs TIF district have been earmarked for Village Enhancement. The plans developed by the VEC will be used by the Selectmen to guide distribution of these funds.



Agenda: Introduction - Existing conditions - Set goals and objectives - Design session - Conclusion

THIS IS A CHANCE TO SHARE WITH OTHERS ALL THE GOOD IDEAS YOU HAVE FOR IMPROVEMENT TO KINGFIELD VILLAGE!

HOPE TO SEE YOU THERE!!

June, 2011

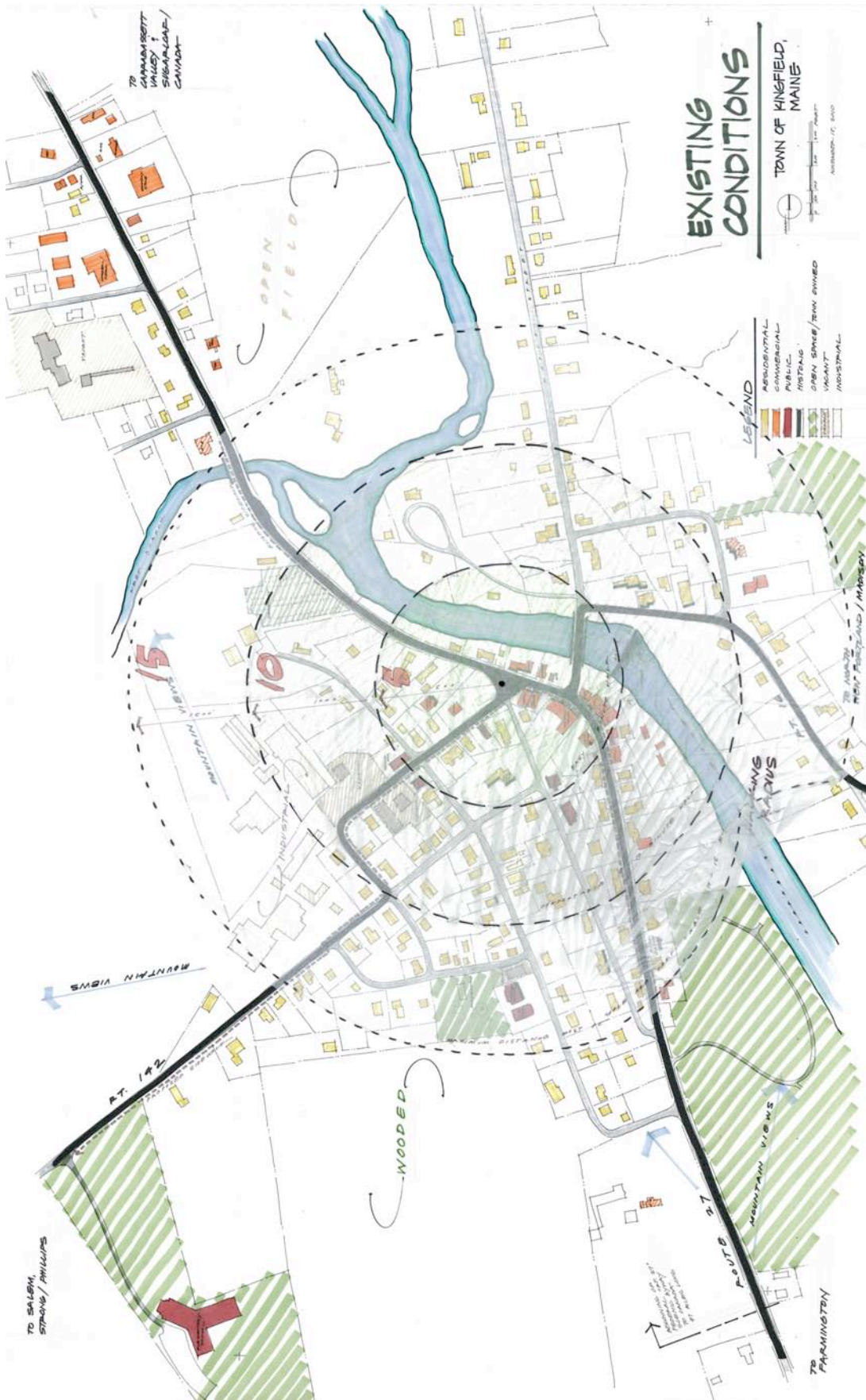
EXISTING CONDITIONS

The area meant by the “Village of Kingfield” needed definition. It was felt the “Village” was best defined as the part of Town that was easily walked; the pedestrian center. An overlay depicting the radius of distance comfortably walked in 15 minutes helped to identify the core Village. Interestingly, this area contains the majority of the original gridded streets, including most of the densely populated residential and commercial properties. Beyond the edges of the circle radius, houses are set further apart and the street grid disappears.

A cluster of larger footprint businesses to the north of town, including the grocery store, gas station and lumber yard, fell outside the 15 minute walking radius but are a vital part of life in Kingfield. Creating a safe and direct pedestrian connection between the Village and this business district is a priority.

The Existing Conditions Plan, shown on the following page, illustrates the 15-minute walking radius, which basically defines the Village Center. The Plan also diagrams general uses, historic structures and unique built and landscape features.

June, 2011



June, 2011

GOALS AND OBJECTIVES

Answering the question “What you would like the VEP to accomplish for the Town of Kingfield?” helped to create a list of Goals and Objectives. The following Goals and Objectives were developed to guide the development of the VEP. This list is stated in approximate order of priority. (See the Appendix for a comparison of VEC and Public Design Workshop generated Goals and Objectives. This list reflects a combination of the two efforts.)

To create a SAFE, PEDESTRIAN-centered Village. People first, bikes second, cars third, trucks fourth. To calm traffic and evaluate for ADA compliance.

To create jobs and support business opportunity and ECONOMIC DEVELOPMENT.

To create gathering places for the COMMUNITY.

To create an ATTRACTIVE Village, to embrace the historic character, defined as: Northern New England, simple, honest, gracious, clean.

To strengthen the ties to OUTDOOR RECREATION, especially to existing hiking, ski, ATV and snowmobile trails.

June, 2011

PROGRAM OF NEED

Answering the question “What you would like the VEP to provide for the Town of Kingfield?” helped to craft a list of program needs. The following Program of Need was developed to guide the development of the VEP. Program elements are listed in approximate order of priority. (See the Appendix for a comparison of the VEC and Public Design Workshop generated Program of Need. This list reflects a combination of the two efforts.)

Sidewalks

Traffic calming/speed control

Crosswalks

‘Village Green’ with music stand/gazebo

Historic walking loops

Riverfront park with gristmill exhibit

Outdoor event space/amphitheater (home for Kingfield Pops)

Access to trails and outdoor recreation

Façade improvements

Good/decorative street lighting

Village gateways (Route 27 north & south and Routes 16/142 east & west)

Bike lanes

Information center/Chamber of Commerce

Better signage

Senior Center

Landscaping (flowers, trees)

Keep existing number of parking spaces (at minimum)

Expand Children’s Park

Farmers Market

Senior Housing

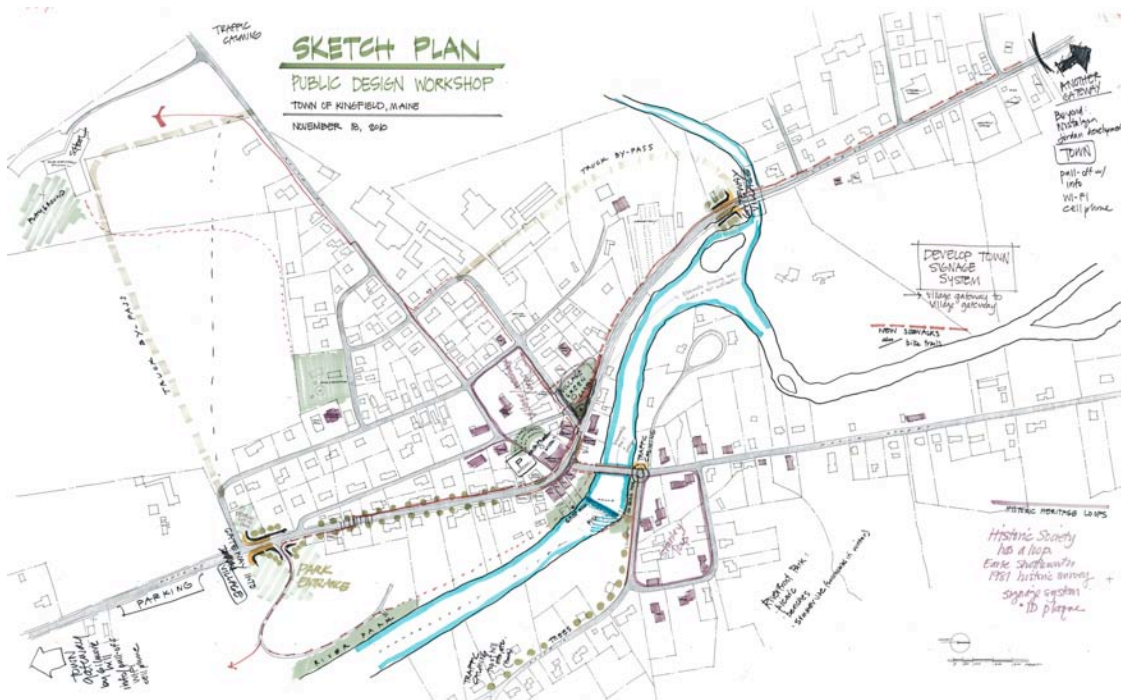
Public trash containers

June, 2011

The following drawings illustrate the similarity between the sketch plan developed by the VEC and the sketch plan developed during the Public Design Workshop. The common elements between the two plans were incorporated into the final Concept Plan for Village Enhancement, or the Village Enhancement Plan (VEP), as described in this document.



Sketch Plan developed by the Village Enhancement Committee



Sketch Plan developed during the Public Design Workshop

June, 2011

FINAL PLAN

The Village Enhancement Plan (VEP) outlined overall concepts that incorporated the program needs in a way that sought to accomplish stated Goals and Objectives. The highest priority goal was to enhance the walkable nature of the Village, improving pedestrian safety, access and potential for community interaction. The VEP illustrated potential streetscape improvements such as reduced paving width, sidewalks, crosswalks, decorative lighting, landscaping, gateway entrances to the Village, parks, playgrounds and open spaces, historic walking loops, a historic grist mill exhibit and development opportunities to be located on a currently available vacant lot within the Village. Seven major projects were identified, as shown within the colored circles on the Plan.



June, 2011

SEVEN ENHANCEMENT PLAN PROJECTS

The VEP outlined seven projects to help guide implementation of the Concept Plan. The projects are listed in approximate order of priority, along with the goals that each project addresses. They projects are summarized below:

Kingfield Village Concept Enhancement Plan Projects

January, 2011



1. Traffic Calming, Sidewalk Improvements, Gateways

Goal #1; To create a safe, pedestrian-centered Village.
Goal #2; To promote economic development.

New sidewalks, crosswalks, bump-outs, street tree plantings, decorative lighting, signage, gateways to the Village.



2. Village Green

Goal #3; To create gathering places for the Community.

Village Green in the center of the Village. An open lawn area with benches, walkways, a gazebo for music performances, art shows, etc. Parking & lighting.



3. Riverfront Park

Goal #3; To create gathering places for the Community.

Public open space along the edges of the River. Walkways, picnic areas, deck at River edge, fishing access and installation of the historic Grist Mill Exhibit.



4. Kingfield Family Park

Goal #3; To create gathering places for the Community. Connect to trails.

Development of a picnic/frisbee toss area along the Carrabassett River. Located adjacent to trails back to Riverfront Park and south through Public Lots.



5. Historic Walking Loops

Goal #4; To celebrate the character of our Northern New England Village.

Two walking loops; The Stanley Loop and The Village Loop which travel by and describe the historic buildings, people and history of Kingfield.



6. 'Knapp Property' Development

Goal #2; To promote economic development.
Goal #3; To create gathering places for the Community.

Community Center/Senior Center, Fitness/Rehab Center, expansion of the Library, Senior housing and municipal parking (50 spaces).



7. Kingfield Town Park

Goal #5; To provide recreation in the Village. Connect to trails.

Expand playground with water park/ice rink and shelter/camp gathering building with indoor space, porch and wintertime fire pit.

June, 2011

STREETSCAPE IMPROVEMENTS AND TRAFFIC CALMING

To satisfy the following goals:

- Goal #1; To create a SAFE, PEDESTRIAN-centered Village.
Goal #2; To support business opportunity and ECONOMIC DEVELOPMENT

The VEP outlined the following elements for the purpose of improving the streetscape and calming traffic along Routes 27, 16 and 142:

- a. Southern Gateway Entrance with landscape, lighting and signage*
- b. Sidewalks, crosswalks, planters, decorative lighting and landscape improvements along the road edges to the Village Center*
- c. Village Center; sidewalks and crosswalks, traffic calming, decorative lighting, landscaping, planters, intersection safety improvements*
- d. Sidewalks, crosswalks, planters, decorative lighting and landscape improvements along the road edges to the North Gateway*
- e. Northern Gateway Entrance with landscape, lighting and signage*
- f. Smaller gateways with signage and landscaping at the 90 degree intersections at routes 142 and 16.*

The above listed series of Streetscape Improvements and Traffic Calming measures are currently being discussed with the Maine DOT Planning Bureau in a planning process called 'Context Sensitive Solution Status' (CSSS). Although not funded in the current Capital Work Plan, the Town has agreed to expend some TIF funds, up to \$20,000 over the next two years, to fund the CSSS process with the DOT. Design parameters for road reconstruction, an overall parking plan, sidewalk improvements, crosswalks, lighting, burying of power, landscape and signage will be developed during this CSSS process. It is the goal of the Town to enter Planning and Design status in the next biennial Capital Work Plan (2014-2015) and for Construction to begin in the following CWP (2016-2017), hopefully complete in time for the Town of Kingfield's bicentennial in 2016!

Gorrill Palmer and DeWan Associates prepared a Traffic Calming Study, commissioned by the town and AVCOG in 2005. In this report, many traffic calming and pedestrian improvements were identified and these recommendations are the foundation of many of the proposed improvements outlined in the VEP.

As a way to slow traffic entering the Village area, the VEP calls for the creation of four gateways; two major gateways at the north and south of the Village along Main Street (Route 27) and two smaller gateways set at the 90-degree intersections entering the Village on Routes 16 and 142. The gateways are envisioned as having landscaped, curbed edges with lighting, flowers and a welcoming sign. The signs would greet visitors, welcome them to the Village of Kingfield and ask that they respect our historic, pedestrian Village. The southern gateway is set above the top of a hill entering the Village, at the intersection of High and Main Streets, as well as the entrance to Kingfield Family Park. The northern gateway is set to the north of the cluster of businesses along Route 27, just north of The Woodsman Restaurant. This is an area of intense vehicular and pedestrian activity and the gateway will serve to announce upcoming commerce as well as slow down through traffic.

June, 2011

VILLAGE GREEN

To satisfy the following goals:

- Goal #1; To create a SAFE, PEDESTRIAN-centered Village.
- Goal #2; To support business opportunity and ECONOMIC DEVELOPMENT
- Goal #3; To create gathering places for the COMMUNITY
- Goal #4; To create an ATTRACTIVE Village, to embrace the historic character, defined as Northern New England, simple, honest, gracious, clean

Set at the center of the Village, at the corner of Main Street (Route 27) and Depot Street (Route 142), the Village Green will provide a focal point for the enhancement of the entire Village center. The front portion of three lots will be combined and two driveways shall be removed in order to create a long contiguous greensward that will house sidewalks, benches, landscaping and a traditional gazebo/bandstand. The Town's beloved watering trough may be relocated 35' to the northwest in order to decrease pavement in the intersection, increase pedestrian green space and provide an attractive setting for the trough. Set prominently at the corner, surrounded by walkways, landscaping and flowers, an historic marker and benches, "meet me at the watering trough" will finally become be a safe and pleasant experience.

Along with musical and dramatic programs anticipated being held in the bandstand during warmer months, the Village Green will provide a public, open space for the staging of events that currently occur on private land or by the closure of state roads, such as Arts Festivals, Christmas and other holiday festivities, veterans celebrations and Farmers Markets. Surrounded by a ring road and sidewalks, the Village Green will become the central gathering point for Western Maine Transportation pick-up, cycling, walking, ATV and other group activities beginning in the Village Center. This is also a good location for an Information Board or small building to distribute information to the many travelers coming to and through Kingfield. Complete with lighting, walkways and seating, a bandstand/gazebo and a large open green, the Village Green will provide a central place in the middle of the Village for the community to meet, gather, celebrate and communicate.



The Village Green, as illustrated on the Concept Enhancement Plan.

June, 2011

Possible Phase II Concept; Creation of a Village Green
(illustrating Option #2, with the watering trough as a gateway to the Green)



The Village Green, as further developed with input from Gorrill-Palmer Engineering.

June, 2011

RIVERFRONT PARK

To satisfy the following goals:

- Goal #1; To create a SAFE PEDESTRIAN-centered Village. To evaluate for ADA compliance.
- Goal #3; To create gathering places for the COMMUNITY
- Goal #5; To strengthen the ties to OUTDOOR RECREATION, especially to existing hiking, ski, ATV and snowmobile trails.

Riverfront Park will create access for the public to the edge of the Carrabassett River as it flows through the Village Center. Set behind a cluster of commercial buildings fronting Main Street, this park will provide an active and fascinating setting for play, leisure, picnicking, fishing and water activities. The park will contain walkways, a picnic area, benches, and potentially a deck at the waters edge. As the River sits above the falls in this area, water in this area is somewhat impounded, slowed down as it waits to fall over the edge of the falls. A deck built here, among the remains of earlier mill artifacts, might provide safe water access for shallow wading. One important aspect of Riverfront Park will be the ability to provide waterfront access for the handicapped and disabled.

The Town has also considered placing an historic Grist Mill exhibit alongside the picnic area in Riverfront Park. This exhibit would house a potentially working Grist Mill and historic information regarding the many mills that lined the edge of the Carrabassett River, in this location, during the early part of the 20th century.



Riverfront Park, as illustrated on the Concept Enhancement Plan.

June, 2011

KINGFIELD FAMILY PARK

To satisfy the following goals:

- Goal #3; To create gathering places for the COMMUNITY
- Goal #5; To strengthen the ties to OUTDOOR RECREATION, especially to existing hiking, ski ATV and snowmobile trails.

Set on the Public Lot to the south of the Village Center, the Kingfield Family Park will provide a large open space for family events and activities along the Carrabassett River. With plenty of open, undulating lawn, this area will be perfect for family picnicking, games, Frisbee tosses, sledding and general play. There is plenty of room for safe parking and the Kingfield Family Park is the perfect starting point for a run, walk or ski on the existing River Trail that follows the Carrabassett south for several miles.

The Public Lot also connects to the regional Black Fly Loop for ATV travel and the Moose Loop for snowmobiling. There is the potential for a river edge trail to connect the Family Park north along the Carrabassett to the Riverfront Park for walk, run, ski, ATV and snowmobile access between the two parks.



Kingfield Family Park, as illustrated on the Concept Enhancement Plan.

June, 2011

HISTORIC WALKING LOOPS

Goal #4; To create an ATTRACTIVE Village, to embrace the historic character, defined as Northern New England, simple, honest, gracious, clean

Kingfield was incorporated in 1816, the birthplace and home of Maine's first governor, Governor King (hence the name Kingfield) and the home of the Stanley Family, inventors of the Stanley Steamer engine and cars. The Town has been home to many businesses, mills, travelers, inventors, and outdoor enthusiasts over the years. Fortunately, many of the historic homes, schools and commercial buildings have been thoughtfully cared for, preserved or restored. Working with representative from the Kingfield Historic Society and the Stanley Museum, several walking loops have been identified that could serve to inform about Kingfield's history while 'showing off' these architectural and landscape gems.

One loop, The Stanley Loop, begins in the Village Center and moves east up and around Maple and Stanley Avenues, passing by many of the oldest and finest homes in Kingfield. Here the story of many of Kingfield's earliest families would be told.

The second loop, The Village Loop begins in the Village Green and passes by the original commercial core that housed mills, a general store, doctor's offices, a pharmacy and the historic Grand Herbert Hotel. This loop also would include a walk by Kingfield's two original schools, The Primary Schoolhouse (1874) and the newer Stanley School (1895) now the Stanley Museum, the Library, the Kingfield Historic House and several churches. Governor King's original homestead is also set along this loop.

Each loop would have markers, historic maps and photos and would be accompanied by a printed brochure describing the loop. This brochure would be available at local businesses, municipal buildings, the Library and Historic House and museums as well as on-line.



Historic Walking Loops, as illustrated on the Concept Enhancement Plan.

June, 2011

KNAPP PROPERTY DEVELOPMENT

To satisfy the following goals:

- Goal #2; To create jobs and support business opportunity and ECONOMIC DEVELOPMENT
- Goal #3; To create gathering places for the COMMUNITY

The 'Knapp Property' is a large, currently un-used lot set in the center of the Village, on either side of Depot Street (Route 142) next to the Library and the Franklin County Health Center. Formerly a car dealership and automobile repair shop, there are three buildings on the site, and an abundance of paved open space. The site is well situated to provide a multitude of in-town needs such as a Community Center, a Senior Center, a Fitness/Rehabilitation Center in conjunction with the Mt. Abram Health Center, expansion of the Library, Senior housing and municipal parking. A preliminary plan uses existing structures to accommodate the Community Center, Library expansion and Rehab facilities. The site could also accommodate approximately 6-10 senior housing units and 50 parking spaces. This is a good parcel for a private-public partnership to provide some much needed amenities for Kingfield's senior population.



'Knapp Property' development, as illustrated on the Concept Enhancement Plan.

June, 2011

KINGFIELD TOWN PARK

To satisfy the following goals:

- Goal #3; To create gathering places for the COMMUNITY
- Goal #5; To strengthen the ties to OUTDOOR RECREATION

Over the past several years the Kingfield Recreation Department has established a playground area behind the Stanley Museum and Town Hall. A popular spot for families with young children, the Town Park could benefit from a small indoor/outdoor building. This building would be used for gathering/camp classes, parent-meeting spot, and used as a shelter during inclement weather. Envisioned to have a table, benches, a porch and possible wintertime fire pit located next to the ice rink that could also be used for summertime cookouts. The ice rink is illustrated as an expanded space and landscaping has been added for additional screening.



Kingfield Town Park, as illustrated on the Concept Enhancement Plan.

June, 2011

APPENDIX

Goals and Objectives; comparison between VEC and the Public		
Village Enhancement Committee report to the Selectmen, December 6, 2010		
<i>Village Enhancement Committee</i>	<i>Public Design Workshop – 11/18</i>	<i>Remarks</i>
To create a <u>SAFE, PEDESTRIAN-CENTERED</u> Village. People first, bikes second, cars third, trucks fourth. To calm traffic and evaluate for ADA compliance.	Make the Village <u>EASY TO WALK AROUND. SLOW THE TRAFFIC.</u>	Highest priority for each group: a walkable, safe Village.
To create jobs and support <u>BUSINESS OPPORTUNITY AND ECONOMIC DEVELOPMENT.</u>		Senator Tom Saviello mentioned the need for better cell phone and Internet coverage.
To promote the <u>CHARACTER</u> of the Village as “Northern new England” defined as simple, clean, practical and gracious, thereby enhancing Kingfield as a <u>TOURIST DESTINATION.</u> Second goal: Improve the <u>PHYSICAL APPEARANCE</u> of the Village, especially re-use of abandoned and neglected areas, i/e/ the Riverfront and Knapp property.	To create an <u>ATTRACTIVE</u> Village with <u>VISUAL APPEAL.</u> Stress the Nostalgic and <u>HISTORIC</u> aspects of the Village.	Many different references to beautification/attractiveness by both groups; centering around the historic and/or appropriate Village character.
To create <u>GATHERING PLACES</u> for people.	To provide <u>PLACES FOR COMMUNITY EVENTS – GATHERING PLACES.</u>	Same goal for both groups, mentioned in a variety of ways.
To develop and promote Kingfield as a Center for the <u>ARTS.</u>		There was mention of encouraging the “Creative Economy” in the Village in the PDW.
	Provide access to <u>RECREATIONAL TRAILS</u> from the Village.	PDW mentioned stressing the Outdoor-orientation of Kingfield area.

June, 2011

Facilities Program; comparison between VEC and the Public		
Village Enhancement Committee report to the Selectmen, December 6, 2010		
<i>Village Enhancement Committee</i>	<i>Public Design Workshop – 11/18</i>	<i>Remarks</i>
Traffic calming measures (as stated in the 2004 Gorrill/DeWan report)	Sidewalks	Highest priority.
Sidewalks; High Street to the Woodsman to the School	Road design, traffic calming, speed control, crosswalks	Second priority. (note the top two are the same for each.)
Village Green/Music Park –a gazebo	Historic walking loop	
Riverfront Park with the gristmill exhibit	Village Green, Public park, Band stand, Music stand, Amphitheater	
Outdoor event space (amphitheater), a permanent home for the Kingfield Pops	Better definition of access to trails; a map of the town and the trails	
Façade improvements on Main/Deport Street; lampposts and decorative lighting	Brighter, better controlled and decorative lighting	
Gateways to the Town; Route 27 north/south, Routes 16 and 142 east/west	Waterfront Park along the River, Riverfront Park, overlook on the River, put-in/take out for canoes	
Outdoor Recreation Center (tied to Maine Huts & Trails, river trail, ATV/snowmobile and other trailheads.)	Bike lanes	
Information Center/Chamber of Commerce Center	Better signage	
Senior Center	Better landscaping; a flower program.	
Little League Field; an easily accessible sporting area.	Tree plantings, especially along roadways	
Expanded Children’s Park	Controlled parking, plan for the future	
Information kiosk	Indoor/outdoor farmer’s market	
Low income & senior housing	Façade improvements, better maintenance	
Arts & Studio space	Public bathrooms	
Arts Center	Public Artwork	
Expansion of the Library	Information Kiosk	
Maintain current level of parking in the Village but better event parking	Public trash containers; public recycling and returnables	

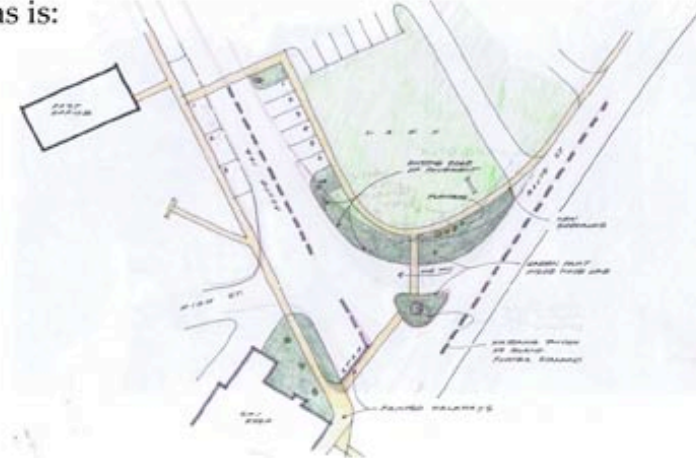
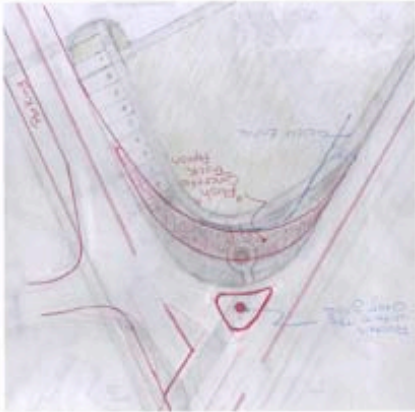
June, 2011

Safety Improvements to Route 27 and 142 Intersection - Options

Kingfield, Maine

March 21, 2011

Option 1: Watering Trough stays as is:



Turning criteria, as determined by
Gorrill Palmer Traffic Engineering, Gray, ME

Advantages:

1. Crosswalk width: 85'
Double crosswalk
2. Slight decrease in amount of driving lanes.
3. No need to relocate watering trough.

Option 2: Watering Trough moves 35':



Turning criteria, as determined by
Gorrill Palmer Traffic Engineering, Gray, ME

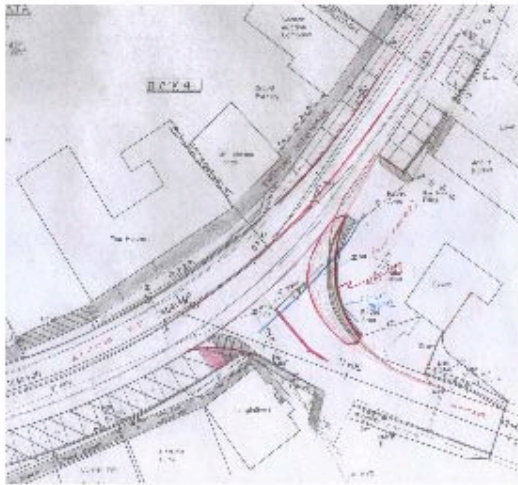
Advantages:

1. Crosswalk width: 57'
Single crosswalk
2. Safer 90 degree intersection with single decision point for traffic; easier sight lines.
3. Watering trough protected from traffic and accessible to people.
4. Creates gathering place around trough with landscape and benches.

June, 2011

Safety Improvements to Route 27 and 16 Intersection

Kingfield, Maine
March 21, 2011



Advantages:

1. Improved pedestrian safety; painted crosswalks.
2. Definition of paving area around Annies.
3. Addition of planters to break up pavement.

Turning criteria, as determined by
Gorrill Palmer Traffic Engineering, Gray, ME



Proposed Design Improvements

June, 2011

The following is the poster/email notice announcing the second April 14 Public Workshop:

Kingfield Village Public Design Workshop

Thursday evening; April 14 at 7 PM at Webster Hall

Please come to discuss ideas for the enhancement of the Village Center in Kingfield. During this workshop we will explore options for improving the safety and appearance of the Village Center for residents and visitors.



Everyone is welcome All ideas are welcome.
Please join the conversation.

Copies of proposed plan options developed by the Village Enhancement Committee are available at Kingfield Town Hall and online at <http://www.kingfield.govoffice.com> (scroll to the bottom of the page.)